

BOOTH B4

VIMA ART
FAIR^{14 - 17.05.2026}

TUDOR

BRATU

MAURICE

MEEWISSE

JOEY RAMONE



For VIMA Art Fair, the gallery presents a dual installation featuring **Maurice Meewisse** and **Tudor Bratu**, creating a complementary dialogue between sculptural and photographic practice. **Meewisse**'s site-specific sculptural work anchors the space, inviting visitors to engage physically and perceptually with material and spatial relationships. **Bratu**'s photographic installation envelops viewers in layered visual narratives that explore place, identity, and temporal perception. Together, the works transform the booth into an immersive environment that guides visitor movement, encourages reflection and connection





MAURICE MEEWISSE

Meewisse's practice resonates with the ideas of philosopher Federico Campagna, particularly those explored in *Technic and Magic*. Campagna examines the intersections of technology, magic, and spirituality, drawing connections between ancient cosmologies, contemporary technological systems and our understanding of planetary forces. His perspective urges a reconsideration of our place in the universe, our relationship to technology and the potential sacredness of the natural world. Likewise, Meewisse critiques modernity while advocating for a renewed engagement with magical thinking as a means to reconnect with mystery, materiality and meaning.

Building upon these ideas, Meewisse has created a new series of Enamel works, marking a fresh direction in his practice. Developed through extensive workshops with participants from diverse backgrounds, these pieces emerged from collective dialogue and shared experiences, allowing Meewisse to crystallize his evolving ideas into new artistic forms.



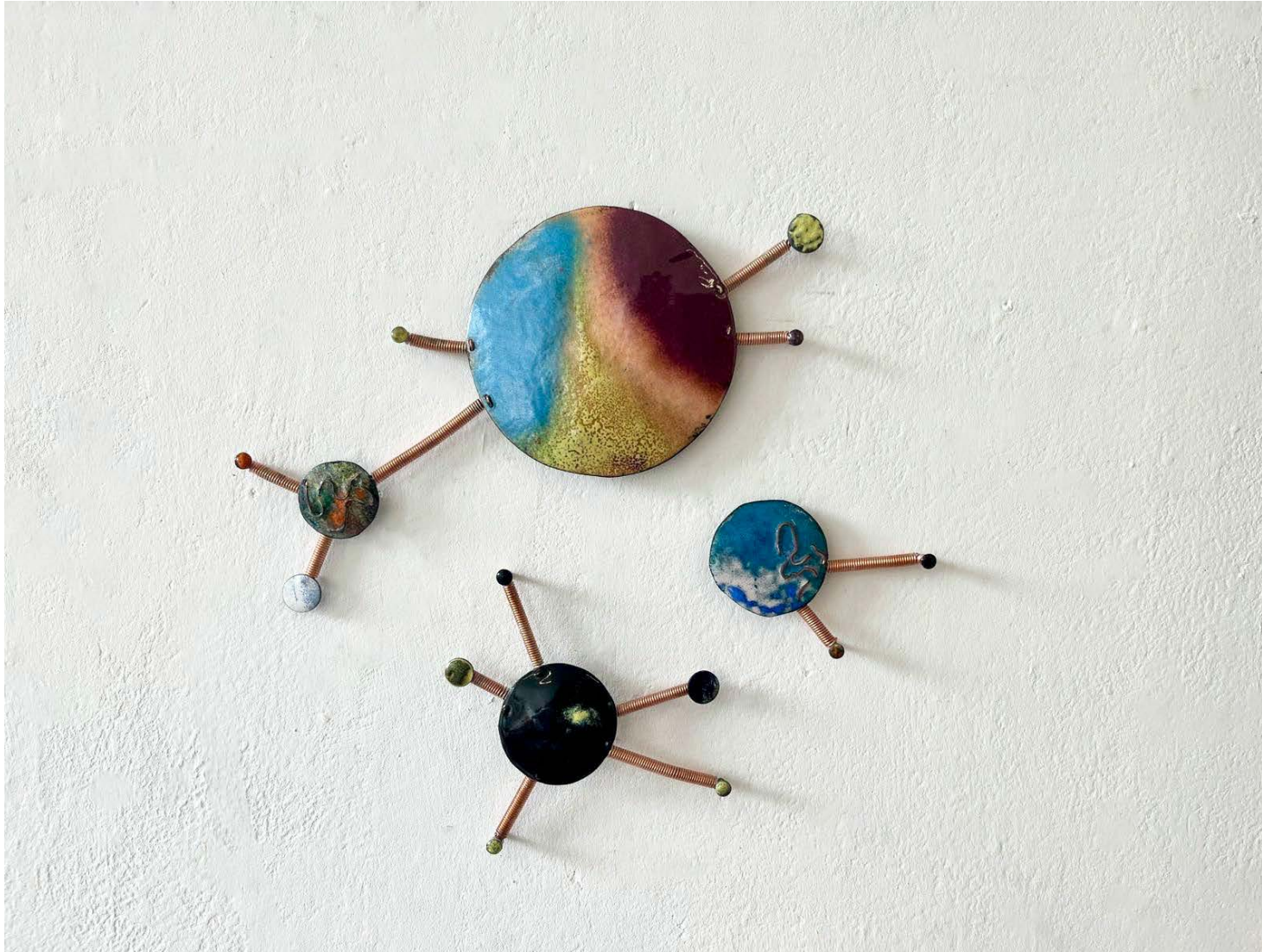
MAURICE MEEWISSE
Constellation #4 | 2026
Enamel, Copper
H 54 x W 35 cm
Unique

€ 3.500, -
Incl. 9% VAT



MAURICE MEEWISSE
Constellation #2 | 2026
Enamel, Copper
H 42 x W 43 cm
Unique

€ 3.500,-
Incl. 9% VAT



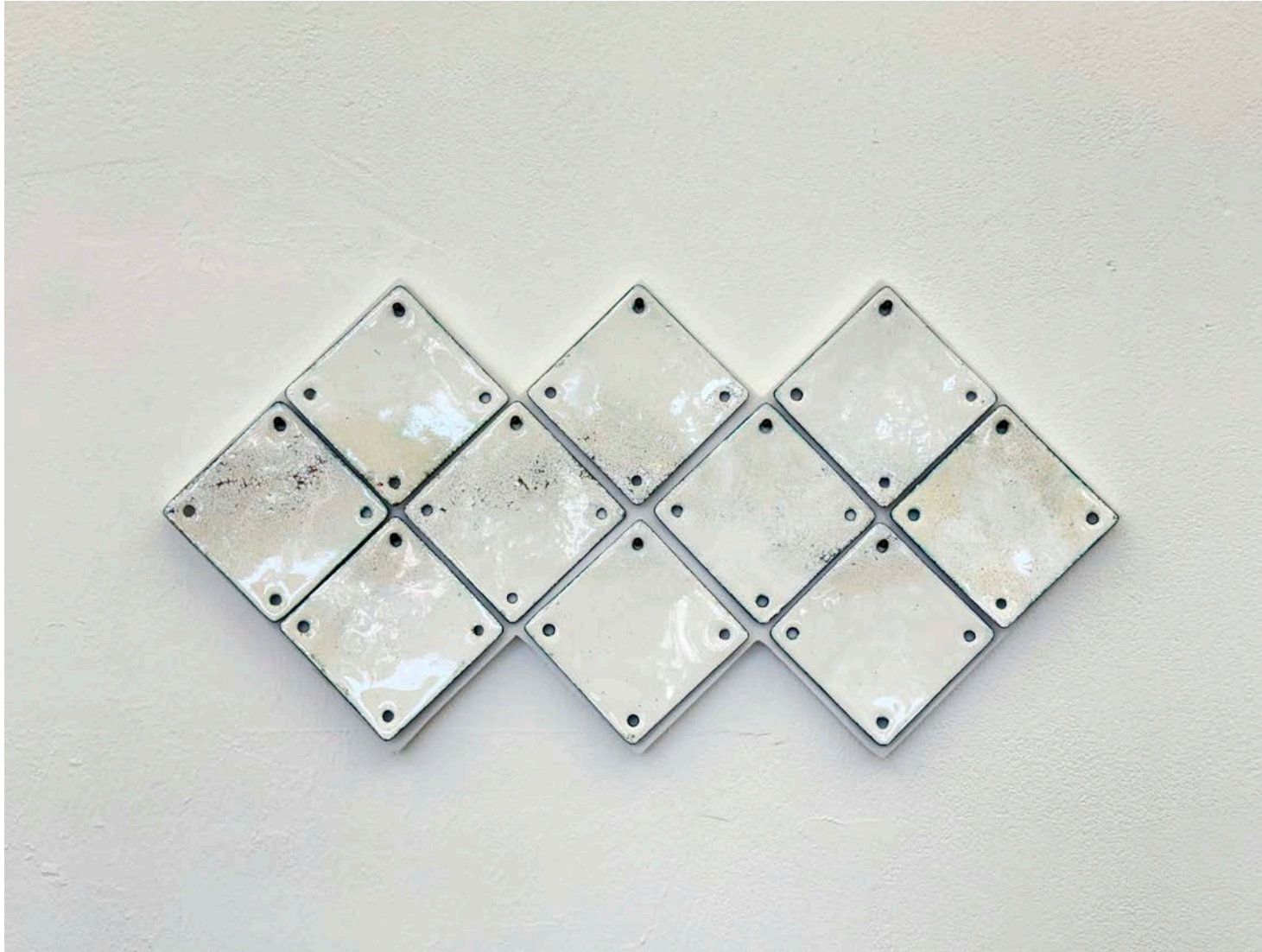
MAURICE MEEWISSE
Constellation #1 | 2026
Enamel, Copper
H 37x W 38,5 cm
Unique

€ 3.000,-
Incl. 9% VAT



MAURICE MEEWISSE
Constellation #3 | 2026
Enamel, Copper
H 61 x W 80 cm
Unique

€ 5.500,-
Incl. 9% VAT



MAURICE MEEWISSE
Enamels | #6 Nebula | 2025
Enamel, Nails
H 21,5 x W 44 x D 2 cm
Unique

€ 2.850, -
Incl. 9% VAT



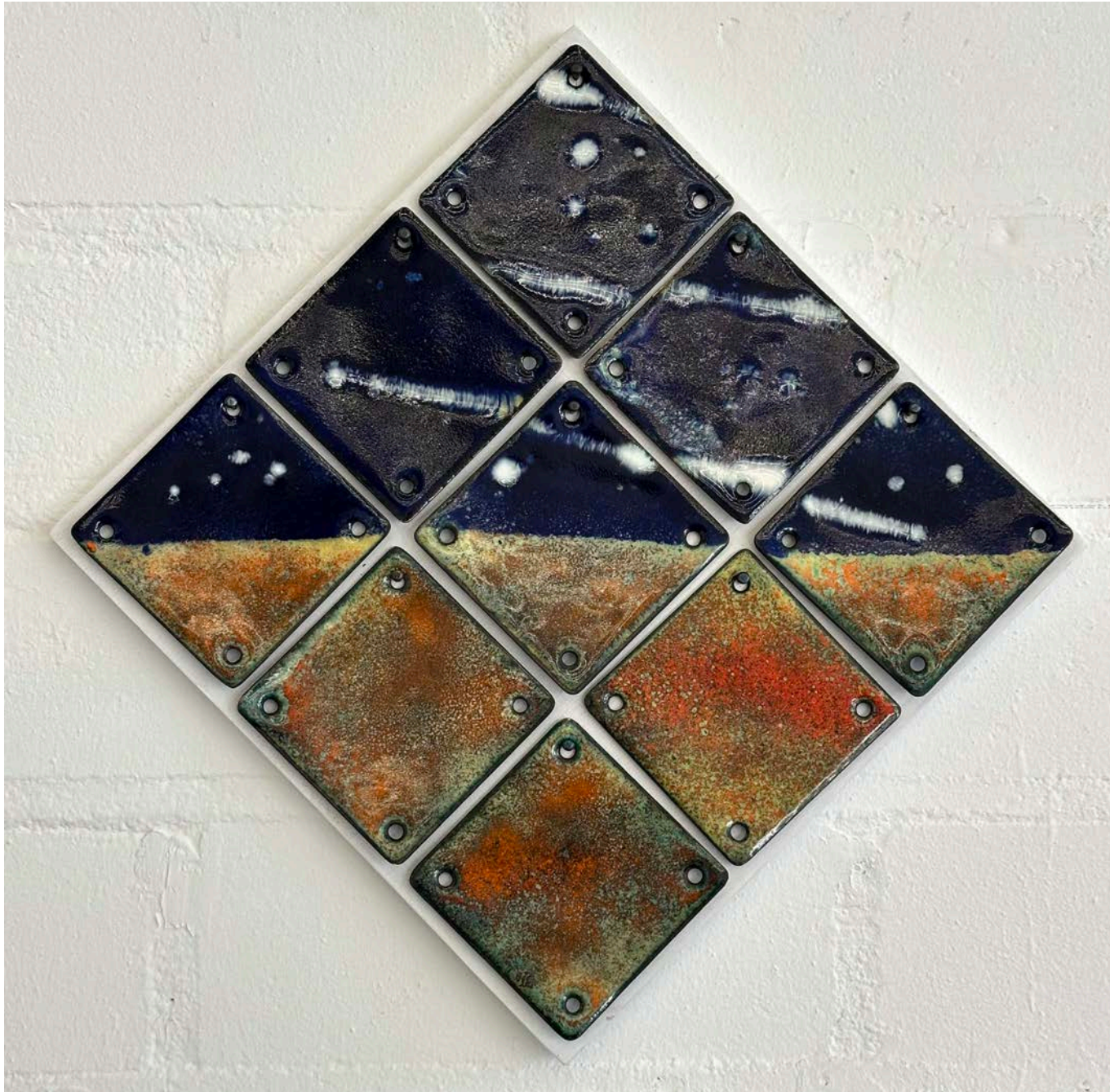
MAURICE MEEWISSE
Enamels | #4 Horizon | 2025
Enamel, Nails
H 34 x W 34 x D 2 cm
Unique

€ 2.500, -
Incl. 9% VAT



MAURICE MEEWISSE
Enamels | #3 Horizon | 2025
Enamel, Nails
H 34 x W 34 x D 2 cm
Unique

€ 2.500,-
Incl. 9% VAT



MAURICE MEEWISSE
Enamels | #1 Horizon | 2025
Enamel, Nails
H 34 x W 34 x D 2 cm
Unique

€ 2.500,-
Incl. 9% VAT



MAURICE MEEWISSE
Enamels | #7 Nebula | 2025
Enamel, Nails
H 19,5 x W 22,5 x D 2 cm
Unique

€ 1.750, -
Incl. 9% VAT



MAURICE MEEWISSE
Enamels | #2 Nebula | 2025
Enamel, Nails
H 28,5 x W 27,5 x D 2 cm
Unique

€ 2.400 -
Incl. 9% VAT



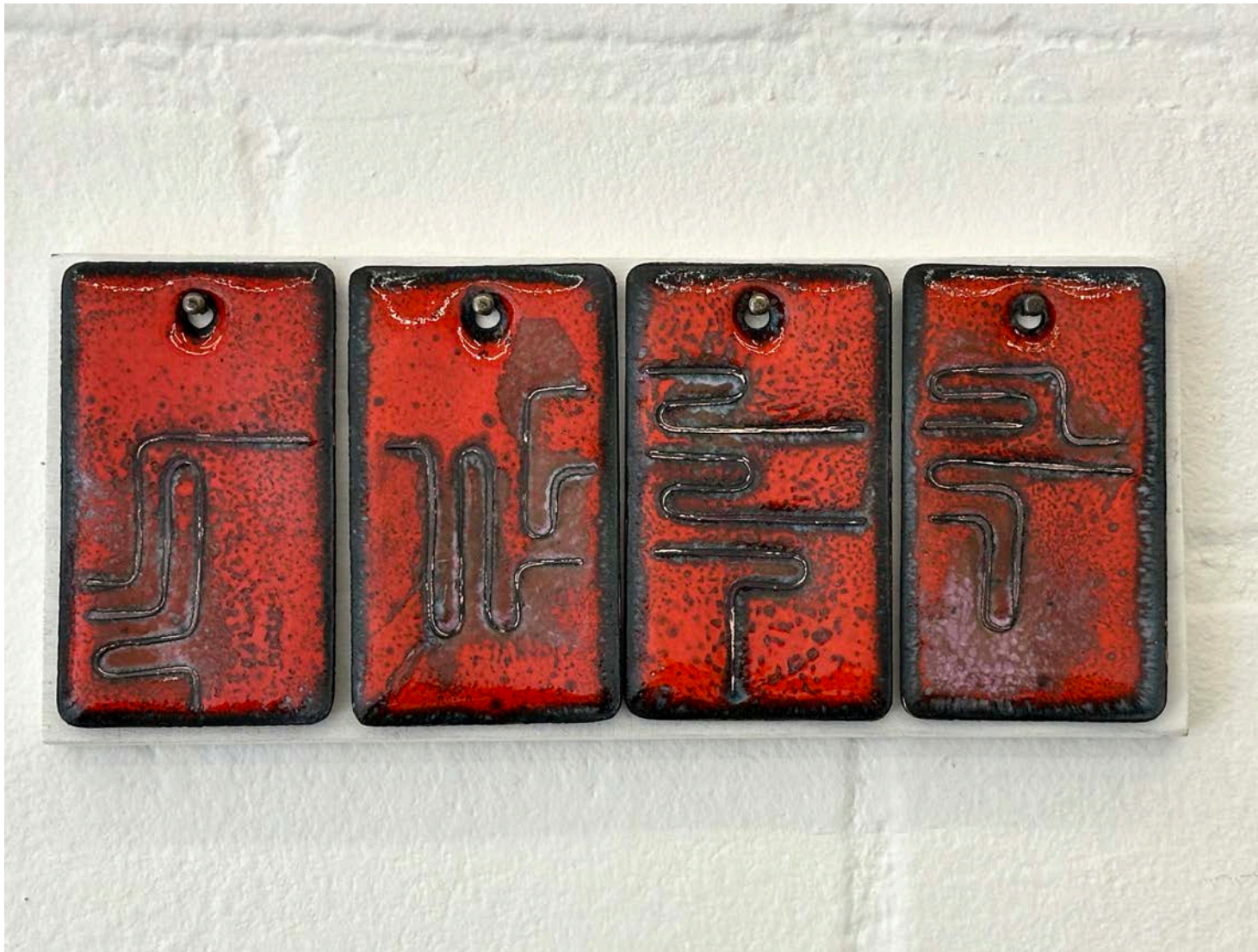
MAURICE MEEWISSE
Enamels | #9 Nebula | 2025
Enamel, Nails
H 28,5 x W 19,5 x D 2 cm
Unique

€ 2.250, -
Incl. 9% VAT



MAURICE MEEWISSE
Enamels | #13 Paths | 2025
Enamel, Copper, Nails
H 11 x W 21,5 x D 2 cm
Unique

€ 2.000, -
Incl. 9% VAT



MAURICE MEEWISSE
Enamels | #10 Paths | 2025
Enamel, Copper, Nails
H 9 x W 21 x D 2 cm
Unique

€ 2.000, -
Incl. 9% VAT



MAURICE MEEWISSE
Enamels | #15 Generator | 2025
Enamel, Copper, Nails
H 14 x W 17 x D 2 cm
Unique

€ 2.000, -
Incl. 9% VAT



MAURICE MEEWISSE
Enamels | #12 Generator | 2025
Enamel, Copper, Nails
H 15 x W 14,5 x D 2 cm
Unique

€ 1.750, -
Incl. 9% VAT



TUDOR BRATU

Bratu's photography does not observe from a distance; it aligns itself with those it depicts. His work addresses the fragile boundary between public space and denied privacy, focusing on individuals who exist at the margins of social visibility. These are figures encountered in streets, homes, and transitional spaces—present yet overlooked, exposed yet unacknowledged.

Working predominantly in black and white, Bratu uses the photographic medium not as an aesthetic gesture but as a form of evidence. His images resist spectacle, embellishment and journalistic narration. Instead, they reveal moments of suspension: bodies at rest or collapse, gestures that go unresolved, lives caught in a continuous state of erosion rather than dramatic climax.

The photographs do not offer decisive moments or clear conclusions. They point to ongoing conditions—social, economic, and psychological—that leave people stranded within systems meant to provide care, progress, or stability. In this sense, Bratu's work reflects a broader reality in which abandonment is not exceptional but structural.

Installed as a sequence, the images create a quiet confrontation. Juxtapositions between people, places and environments expose recurring patterns of neglect and disconnection. White spaces between the works allow room for reflection, memory and personal association, underscoring the viewer's role in witnessing what is often ignored.

The Burden of Proof asks us to look carefully and to recognize presence where society has learned not to see. The exhibition insists that these lives are not peripheral—they are facts, demanding awareness and responsibility.



TUDOR BRATU
The Burden of Proof | 2026
Hahnemuhle Fine Art Paper
28 x 40 cm each
Edition 3 + 2 AP

€ 550,- each
Incl. 9% VAT



TUDOR BRATU
The Burden of Proof | 2026
Hahnemühle Fine Art Paper
28 x 40 cm each
Edition 3 + 2 AP

€ 550. - each
Incl. 9% VAT



TUDOR BRATU
The Burden of Proof | 2026
Hahnemuhle Fine Art Paper
28 x 40 cm each
Edition 3 + 2 AP

€ 550, - each
Incl. 9% VAT



TUDOR BRATU
The Burden of Proof | 2026
Hahnemuhle Fine Art Paper
28 x 40 cm each
Edition 3 + 2 AP

€ 550,- each
Incl. 9% VAT



TUDOR BRATU
The Burden of Proof | 2026
Hahnemuhle Fine Art Paper
110 x 82 cm
Edition 3 + 2 AP

€ 4.600, -
Incl. 9% VAT



TUDOR BRATU

Tudor Bratu (b. 1977, Bucharest, RO) graduated from the Gerrit Rietveld Academy in 2003 and studied Art History at the University of Amsterdam. He completed a two-year Research Residency at the Rijksakademie voor Beeldende Kunsten in 2008. Since 2010, he has served as managing director of Bucharest AiR, an artists residency program in Romania, and from 2013 has collaborated as artistic director with Chongqing Artists-in-Residency in China.

Bratu's multidisciplinary practice includes photography, bookmaking, and installation, with works held in prominent international collections such as FOAM Amsterdam, the Bibliothèque Kandinsky at the Centre Pompidou, the Rijksakademie collection, Ministry of Foreign Affairs in The Hague, Utopicus Collection in Barcelona and the Allard Pierson Collection in Amsterdam.

Tudor Bratu lives and works in Amsterdam.



MAURICE MEEWISSE

Maurice Meewisse (b. 1978, Pijnacker, NL) holds a BA in Art from the Willem de Kooning Academy in Rotterdam and a Masters of Fine Arts from the ST Joost in Breda. In 2019 he finished the post-master program of a.pass (advanced performance and scenographic studies, Brussels). He has realized projects in Russia (NCCA, Jekaterinburg), Denmark (Sculpture by the Sea) as well as in the Netherlands (Into Nature, Drenthe 2021).

With his work Meewisse offers a critique of modernity while proposing a reclamation of magical thinking as a way to enrich our lives and reconnect with the misteries of existence.

Since 2020 he is working as an artist/curator at Buitenplaats Brienoord in Rotterdam. In September 2022 he joined the a.pass Research Center in Brussels as an associate researcher.

Maurice Meewisse lives and works in Rotterdam.

JOEY RAMONE

Josephstraat 166-168
3014 TX Rotterdam
The Netherlands

www.joeyramone.nl
gallery@joeyramone.nl
[@joey_ramone_rotterdam](https://www.instagram.com/joey_ramone_rotterdam)